



EZT-430i TOUCH SCREEN CONTROLLER



EZT-430i Touchscreen Controller

YOU CHOOSE!

Choose from drop-down menu navigation or icon-based navigation like smartphone/tablet technology

Communications & Connectivity

- Ethernet capability to remotely monitor and control multiple test chambers. Wired, wireless, local area network or World Wide Web Ethernet connectivity provides anytime, anywhere access. Three options to remotely control & monitor your chambers:
 1. Use a web browser and type in a web address to monitor your chamber from any computer or wireless PDA device.
 2. Use Ethernet to monitor and control from your computer or wireless PDA device (i.e. iPad, iTouch, etc.).
 3. Use CSZ optional EZ-View software to monitor & control multiple CSZ chambers and download profiles.
- Alarm notification system sends email and/or text phone messages in the event of a test chamber alarm, saving valuable tests while reducing downtime.
- Integrated email sends data files directly from the controller with a touch of a button.

Data Logging

- Data logging with custom file names, batch & lot numbers, operator events & digital signatures.
- Automated “Ethernet” back-up of data files provides “hassle free” file management.
- Easily download profiles, alarm files, audit trail files and data files to USB memory stick in a compatible .CSV file format. Also import profiles to other chambers saving valuable profile entry time.
- Access data files directly from controller or PC.
- Digital Signatures to guarantee data integrity & traceability for tamper-proof data & audit trail files.
- Audit trail files tracks changes in settings by each user.



Main View



Windows - Based Navigation



Icon - Based Navigation

User Convenience & Flexibility

- Real time & historical trend graphs.
- Unlimited number of profiles. Each profile up to 64 steps with up to 3 events per loop.
- Profile status view.
- 27 different languages - one setting updates icons, menus and help screen.
- Access alarm history files and view detail for troubleshooting.
- Plot two sets of data, one on each axis.
- Notification window accessed by pressing the date/time field in the icon bar includes current PV and SP, name of active profile, alarm status, data logging, current user, IP address web/VNC status, and SD storage remaining.



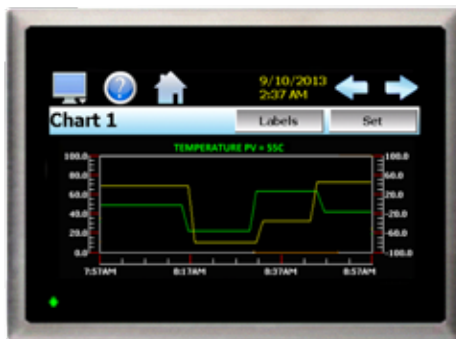
Language Setting

Enhanced Functionality

- Selectable power failure/recovery options.
- Fully configurable alarm settings.
- Full system security allows up to 30 different users with four different levels of security.
- Import/export configuration settings to other controllers saving time. (Personalized to your use)



Notification Screen



Trend Graph



Data Logging



FTP Data Back Up



Security

CSZ is committed to your satisfaction every step of the way.

We are dedicated to our customers from the initial point of contact, fully understanding your unique needs, developing the right solution and delivering outstanding products and post-sale support.



CSZ has two manufacturing facilities in Cincinnati, OH with world-wide sales and service.

Your one stop solution for Environmental Chambers

- Temperature Cycling
- Humidity
- Stability Cabinets & Rooms
- Thermal Shock
- Stress-Screening
- Altitude
- AGREE Vibration
- HALT/HASS
- Freezers
- Liquid Chillers
- Wind & Rain
- Sand & Dust
- Other Temperature Management Solutions

Sizes range from benchtop to full walk-in/drive-in chambers.

Services

- Refrigeration Retrofits
- Controller Upgrades
- Preventative Maintenance
- Calibration Services

Testing Services

CSZ Testing Services is an A2LA Accredited Test Laboratory utilizing the latest test technology. We are your one stop source for all of your environmental simulation testing needs. Our testing laboratory is here to help with your product qualification testing, overflow testing and /or third party product validation. Testing capabilities include Temperature, Humidity, and/or Vibration, Thermal Shock, Burn-in, Radiator Testing, Altitude, Vibration, HALT/HASS, Shock, Salt Spray, and Cyclic Corrosion test. Serving you from two locations in Cincinnati, OH and Sterling Heights, MI.

FOR MORE INFORMATION please call CSZ Testing headquarters at 513-793-7774 or visit www.csztesting.com.



Cincinnati Sub-Zero
12011 Mosteller Road
Cincinnati, OH 45241

(p) 513-772-8810

(f) 513-772-9119

www.cszindustrial.com