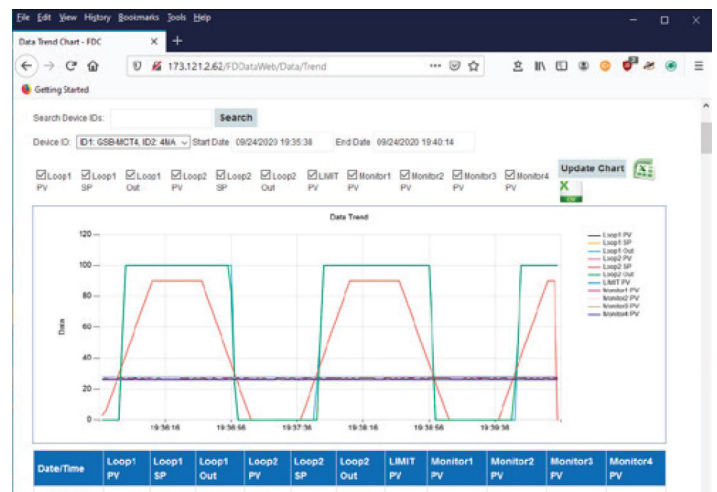
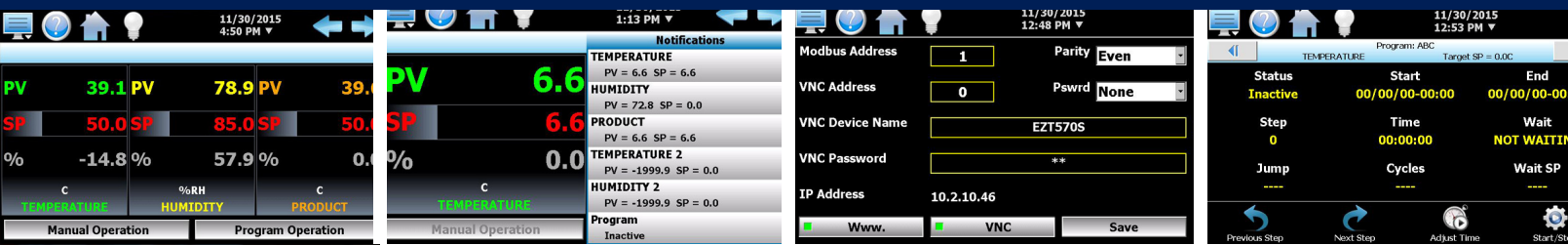


CSZ-CONNECT SOFTWARE

EASILY CONNECT ALL THE CHAMBERS IN YOUR LAB
ONE SOURCE TO MONITOR ALL YOUR TEST DATA

Our CSZ-Connect software allows you to connect multiple chambers and access your data from a web browser. This new software resides on a Local PC and is a LAN based, "SQL" compatible data acquisition system. It provides real time data storage, automated file backup and stores controller configurations for the CSZ EZT chamber controllers connected to your local computer. Use web browser to view, trend, backup or configure each EZT controller on the network.

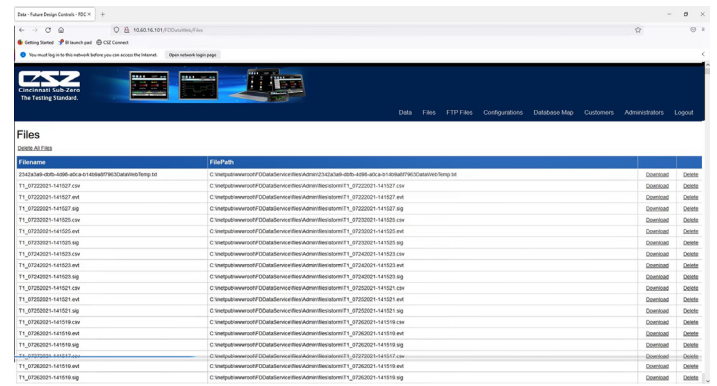
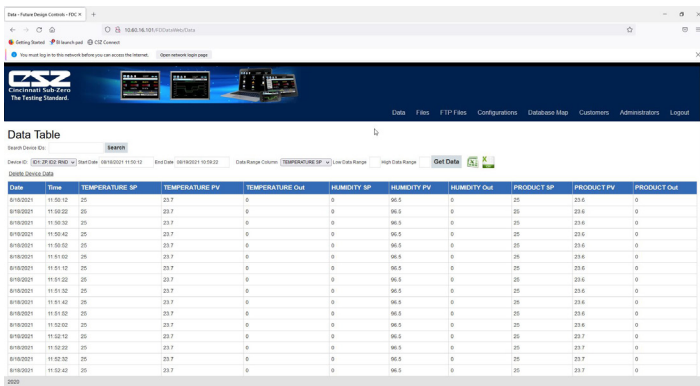




CSZ-Connect Software

Locally installed software provides data logging, file access, and trend graphing for multiple chambers with access from any web browser. All data resides on your LAN for data security.

- Access your data files, alarm files and audit trail files from your web browser.
- Provides back up of your data to server directory you specify.
- Files and data can be downloaded in a .csv or .xlsx format. Real time data/file data digitally signed to ensure data integrity.
- System automatically configures your data logging information from settings on your controller for simple setup.
- Data files are in a SQL database and fully searchable by ID, date, time, or controller variable.
- Simply select date/time range to view your data file.
- Easily configure and display trend chart real time. Simply select the date or time frame you would like to trend. Screen shot your charts and save for your test documentation.
- View chart and data table on the same screen.
- All configuration and real time settings at each controller are transferred to the server automatically for easy restore to your EZT controller when it is needed.
- Administrators can provide access to users for all chambers or specific chambers you specify in your lab.
- Configure your software and show only the functions you want to display.



Compatible with CSZ EZT-570S, EZT-430S controllers and Windows 7 and 10. LAN (Local Area Connection). Ethernet connectivity to each EZT controller. SQL (Structured Query Language) compatibility for open system database access with proper credentials.

Operating System:
Windows 10 Home or Pro
Net 4.6 Framework Min.
(Full or Client Profile)

Hardware:
CPU: Intel Core or Xeon 3GHz
Cores: Single (Dual/Quad recommended)
RAM: 4 GB (6 GB recommended)