



EZT-570S TOUCH SCREEN CONTROLLER

The Next Generation Controller with Smartphone Technology



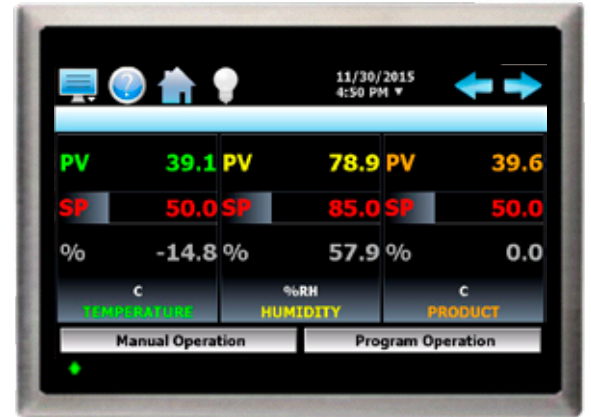
EZT-570S Touchscreen Controller

The Next Generation Controller with Smartphone Technology

Save valuable time with the EZT-570S featuring fewer steps to accomplish your daily testing needs. Simplified operation and programming is incorporated into an improved interface with added functionality for ease of use. The EZT-570S is designed off of previous CSZ controller platforms so it is compatible with existing LabView applications and software.

All features are built into the controller interface so no additional software or internet is required for access to all the features the controller has to offer.

Manually control, run or stop a profile directly from the home screen and view a snap shot of current activity like actual/setpoint values, alarm, datalogging, profile, security, IP address information and more.



Communications & Connectivity

- Remotely monitor and/or Control the chamber for anytime, anywhere access from any device (PC, smartphone or tablet) using LAN/VNC.
- Multiple chambers may also be managed using VNC or CSZ's optional EZ-View PC software to monitor & control CSZ chambers and download profiles.



- Alarm notification system sends email and/or text phone messages in the event of a test chamber alarm, saving valuable tests while reducing downtime.
- Ethernet TCP/IP, EIA-232, EIA-485 communications.

Remotely monitor and control the chamber, receive email or text alarms.

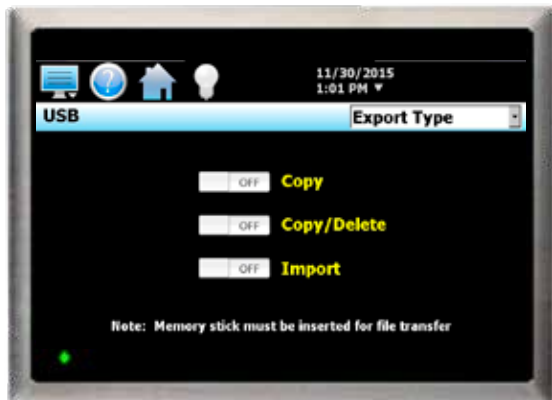


Profiling

- Profiling includes up to 99 steps and 1000 cycles.
- Program ramp steps entering time or °C/min.
- Activate optional digital outputs during specific steps of profile.
- Programs may also be written using product control function.
- Easily review profile using trend chart or review list of steps before running profile.
- Automated delay profile start.
- Profile status view displays current step estimated start/stop date and time and more.
- Profiles may be transferred to different chambers via USB or optional EZ-View software.

Data Logging

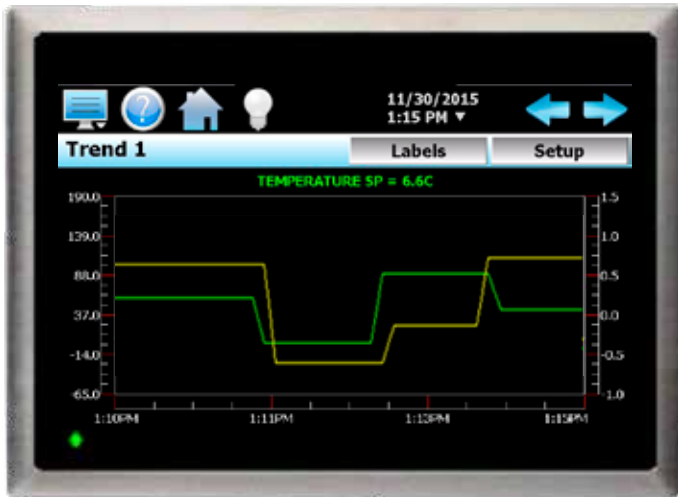
- Data logging with custom file names/length, ID numbers, digital signatures and unlimited number of operator notes saved to data file.
- Easily download profiles, alarm files, audit trail files and data files using USB or email from controller in a compatible .csv file format for ease of use. Also import profiles to other chambers saving valuable profile entry time.
- Files may also be automatically backed up daily for hassle-free file management using FTP. FTP/FileWeb/DataWeb (LAN/WAN).
- Access data files directly from controller or PC.
- Open and plot historical data files.
- Data logging supports both system and operator digital signatures for quality and regulatory requirements.
- Audit trail files tracks changes in settings by each user.
- Data Files may be easily graphed with free PC Data Viewer software for printing or saving a graph as a .jpg.
- Email built-in to send data, alarm, audit trail files directly from controller. Also create and send new emails.



EZT-570S Touchscreen Controller

User Convenience & Flexibility

- Controller may be configured in any of one of 28 languages - one setting updates icons, menus and help screen.
- Fully configurable alarm settings.
- Selectable power failure/recovery options.
- Full system security allows up to 30 different users with four different levels of security.
- Audit trail files track changes in settings by each user.
- Import/export configuration settings to other controllers saving time. (Personalized to your use)
- Configure maintenance/service alerts.
- Adapt-a-tune technology provides excellent control stability.



Graphing Technology

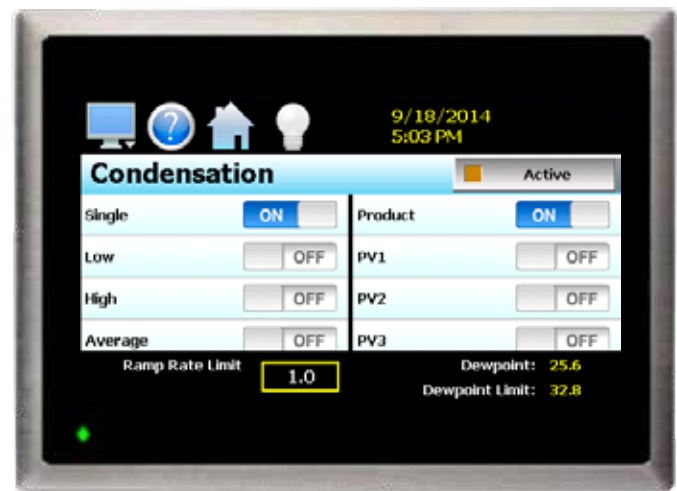
- Real-time trend display graph with adjustable time and min/max values.
- Up to eight configurable trend graphs with left & right axis.
- Graph historical data files.
- Zoom in/out graphs.





Enhanced Communications & Control Options

- Digital input option provides 8 inputs that can be configured for various control functions including starting, stopping and pausing a profile. "Wait for" function allows the user to pause a profile during a particular step of the profile until a specific digital input is turned on or off.
- Digital output "customer event" feature provides 15 programmable outputs. Each output can be configured to perform other operations including alarm or profile status indicators for more control over your testing.
- Optional refrigeration monitor package displays and data logs temperatures and refrigeration system compressor suction/discharge pressures.
- Condensation control option helps prevent condensation from collecting on the part by automatically managing the air dewpoint.
- Bar code option allows user to scan barcode to start profile and to add notes to current data file when datalogging.



Configurable service maintenance alerts to help keep your chamber operating at optimum performance.



Cincinnati Sub-Zero is a product brand of Weiss Technik North America, Inc. Weiss Technik North America is a member of the Weiss Technik group of companies, a division of the Schunk Group with its headquarters in Heuchelheim, Germany. Weiss Technik is the world's largest manufacturer of environmental simulation systems and employs more than 2,400 people in 22 group companies in 15 countries.



Testing Services

Our AZLA Accredited Test Laboratory provides environmental simulation testing utilizing the latest test technology to meet your testing needs from product qualification testing, overflow testing and /or third party product validation. Capabilities include Temperature, Humidity, and/or Vibration, Thermal Shock, Burn-in, Radiator Testing, Altitude, Vibration, HALT/HASS, Shock, Salt Spray, Cyclic Corrosion test and Drop Testing. Serving you from two locations in **Cincinnati, OH** and **Sterling Heights, MI**.

FOR MORE INFORMATION please call our Testing headquarters at **513-793-7774** or visit **www.wnatesting.com**.



Weiss Technik North America, Inc.
Cincinnati Facility
12011 Mosteller Road
Cincinnati, OH 45241
(p) **513-326-5252**
(f) **513-326-5258**
www.cszproducts.com